

AQUAKING RED LABEL

PRODUCT CATALOG
2022



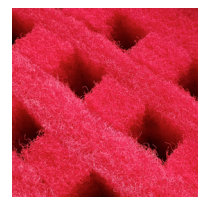
NEW
2022

MODEL
2022

PATENT
PROTECTED
2025346

CONTENTS

Contents	2
Introduction	3
AquaKing Red Label BASIC & PRO filters	4
Combi JOY & HAPPY filters	6
BASIC Drum filters	8
BASIC Combi filters	10
INLINE Combi filters	14
BASIC Trickle filters	16
PRO Drum filters XL	18
PRO Combi filters XL	20
PRO Combi filters pit	22
PRO Leaf filter	24
PRO Trickle filters	26
Custom work	28
Protein skimmer	30
Bottom drains	30
ANP pond pumps	32
ACP pond pumps	34
UVC filters	36
Air pumps	38
Rubber couplings	40
Materials / parts	42
Automatic refill system	49
Filter setup	50
Colophon	51



INTRODUCTION

We proudly introduce you to our Red Label filter systems and products. The foundation of these filter solutions consists of the famous Red Label drum filter. This Dutch-made drum filter is made of polypropylene (PP) and provides the best possible mechanical filtration. High-quality innovative solutions within this drum filter combined with extremely high ease-of-use make Red Label filters unparalleled.

The ideal extension of the Red Label drum filter is the Red Label moving bed filter end room with filter mats for the necessary biological filtration of your pond water. This combination is coordinated in such a way that a stable bacterial culture is guaranteed and the decomposition of harmful substances is optimal. Combi filters combine a drum filter, moving bed filter and filter mats in one compact filter system for optimal water quality.

Red Label provides a number of products that, in combination with our filters, can realise the best conceivable system for your pond. From high-quality pond pumps to UVC equipment and bottom drains. We also recommend a number of additional top products in this catalogue that can complete your pond system.

Red Label products offer a complete, optimal and suitable solution for every situation. If you have any questions, we will of course be happy to answer them. You can send an email to info@aquaking.nl or call +31 73-521 27 30 any time.

Kind regards,
Aquaking Red Label



AQUAKING RED LABEL

INNOVATION.

The product development department at Red Label is constantly working on applying innovations and coming up with improvements and new filter solutions. We focus for the most part on questions that arise from the practical situation of end users. We continuously consult with dealers, gardeners and directly with hobbyists so that we remain fully informed of practical requirements. With this feedback we can immediately respond to possible product improvements.

In the field of potential raw materials for Red Label products, we are constantly aware of the latest developments. To a large extent, environmental aspects are taken into account. We only use suppliers who meet our strict quality and environmental standards. A challenge for our product development department is to determine the applicability of materials and they monitor the high Red Label quality requirements.

The close cooperation between our professionals and our associates ensures that your Red Label product is always equipped with the latest technology and latest ideas in the field of filtering. Our extensive experience in product development has now resulted in a wide range of filter solutions. From the best imaginable drum filters and trickles to the most advanced total solutions, completely according to your wishes. If you have ideas or suggestions, please contact our Red Label specialists. We are always open to your feedback.

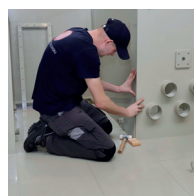
CUSTOM WORK.

Aquaking Red Label manufactures all its filter solutions in-house. The Red Label production hall is designed exclusively for manufacturing our products. Various production units and the most modern equipment enable a very efficient and effective way of production. Of course, all this is not possible without highly qualified and trained personnel. Delivering constant top quality always has the highest priority at Red Label.

Due to our working method and applied means, we are only dependent on third parties to a limited extent. Our production methods result in great flexibility, which ensures extremely short delivery times.

Every specific situation requires a suitable solution. If our very wide range does not match your specific requirements, we can still offer you a solution in almost all cases. In consultation with our advisers you can realise the most extreme filter preferences and solutions. From adding an extra input or output to your drum filter to putting together a filter completely according to your wishes.

You've come to the right place at Red Label!



BASIC & PRO FILTERS

COMPLETE QUALITY.

Each Red Label filter system is assembled with care from the highest quality raw materials and partial products. To provide a suitable filter system for every situation, our range consists of a BASIC and a PRO series. Red Label filters are largely known for the large amount of standard accessories. If the standard version does not fully meet your wishes, it can easily be expanded with various options.

- Included as standard.
- Optional as extra cost.

	COMBI JOY & HAPPY FILTER	BASIC DRUM FILTER	BASIC COMBI FILTER	INLINE COMBI FILTER	DRUM FILTER PRO XL	COMBI FILTER PRO XL	COMBI FILTER PRO PIT
High-quality polypropylene	●	●	●	●	●	●	●
Built-in UVC unit 40 Watt	●	●	●	●			●●
Built-in INOX UVC unit 80 Watt					●	●	
Built-in flushing pump 3 bar	●	●	●	●			
Built-in flushing pump stainless steel 5 bar					●	●	●
BASIC stainless steel filter screen 120 m	●	●	●	●			
PRO stainless steel filter screen 70 m					●	●	●
BASIC control box	●	●	●	●			
BASIC LUXE control box	●	●	●	●			
PRO control box with adjustable rinse level					●	●	●
Low-water security	●	●	●	●	●	●	●
Mechanical adjustable rinse level	●	●	●	●			
Adjustable rinse level by pressure sensor					●	●	●
VDL slide valves	●	●	●	●	●	●	●
Pipeconx rubber couplings	●	●	●	●	●	●	●
Filter media moving bed filter HEL-X	●		●	●		●	●
Filter media RED X filtermats cassette	●		●	●		●	●
2 year warranty*	●	●	●	●	●	●	●
Including servicedesk	●	●	●	●	●	●	●

*warranty except stainless steel filter screen, UV-C lamp and quartz glass.



FEATURES:

- High-quality polypropylene
- Stainless steel screen 120 m
- Built-in flushing pump
- Built-in UVC unit INOX
- Including control box
- Float steered
- Adjustable rinse level
- Low water security
- Patented sealing
- Gutter brush system
- Includes cover
- Includes service desk
- Multi language manual
- 2-year warranty*
- Made in the Netherlands

COMBI JOY & HAPPY

We would like to introduce you to our latest filter system, the JOY combi filter. A very complete total filter with a capacity of no less than 20,000 liters per hour. The combination of drum filter, UVC built-in unit, moving bed filter and mat chamber ensure that you can fully enjoy the pond hobby with a low-maintenance filter system. The low installation height ensures that the combi JOY can be used on almost any small to medium-sized pond.

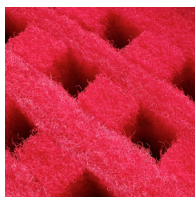
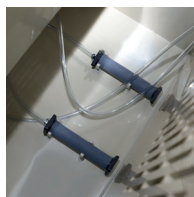
Red Label JOY en HAPPY filters offer a high-quality and highly complete filter system at the best possible price. These Red Label filters come standard with a number of unique extras. These models are equipped with a built-in flushing pump. This results in less noise, a smaller installation space for the total filter and more efficient functioning of the drum filter.

These filters are standard equipped with a built-in UVC unit with a 40 Watt INOX lamp. This unit ensures crystal clear pond water by destroying algae, bacteria and fungi. This can eliminate UV equipment in your piping system, which promotes optimal flow.

Like all our drum filters, JOY and HAPPY combi filters are equipped with our new patented drum filter sealing system. A protective cap prevents the influence of the UV light on the seal of the drum, which guarantees a long service life. The unique double brush system in the drum filter keeps the dirt discharge chute clean so that the filter system requires even less maintenance.

JOY and HAPPY filters have a very compact construction that is equipped with all conveniences as standard. The 3 filter spaces are respectively provided with a drum filter, a moving bed filter and a chamber that can be filled in with, for example, filter mats. An internal flushing pump, a built-in UVC unit, air pipes and the 2-year warranty complete this top deal.

Happy filters are available in both gravity and pump-fed versions.



COMBI FILTER

F2010012



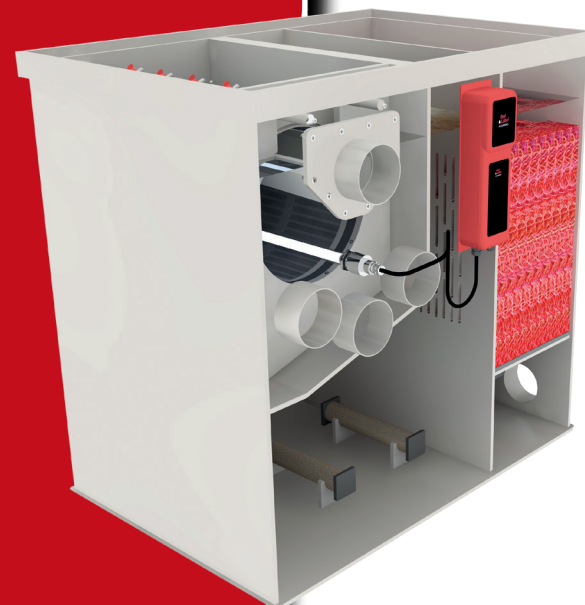
NEW
2022

COMBI JOY

Measurements L x W x H	1190 x 892 x 750 mm
Panel size	400 x 400 mm
Mesh size	120 m
Maximum flow	20.000 liter
Maximum pond content	40.000 liter
Maximum pond content koi	20.000 liter
Inlet	3x 110 mm
Outlet	1x 110 mm
Flush pump	internal Q800103
UVC built-in unit	40 Watt INOX
Air supply	2x 40 x 210 mm
Filter media optional	RED X cassette
	30 liter bwv HEL-X

COMBI FILTER

F2010005



COMBI HAPPY

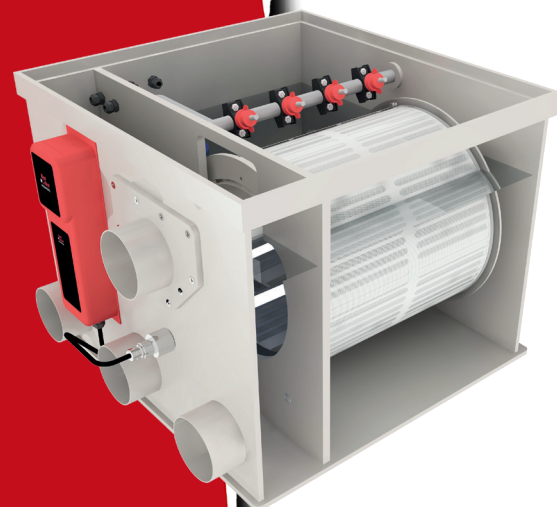
Measurements L x W x H	1186 x 886 x 990 mm
Panel size	400 x 400 mm
Mesh size	120 m
Maximum flow	25.000 liter
Maximum pond content	30.000 liter
Maximum pond content koi	20.000 liter
Inlet	3x 110 mm
Outlet	2x 110 mm
Flush pump	internal Q800103
UVC built-in unit	40 Watt INOX
Air supply	2x 50 x 300 mm
Filter media optional	RED X cassette
	50 liter bwv HEL-X

FEATURES:

- High-quality polypropylene
- Stainless steel screen 120 m
- Built-in flushing pump
- Built-in UVC unit INOX
- Including control box
- Float steered
- Adjustable rinse level
- Low water security
- Patented sealing
- Gutter brush system
- Includes cover
- Includes service desk
- Multi language manual
- 2-year warranty*
- Made in the Netherlands

DRUM FILTER

F2010002



BASIC DRUM 20/25

formerly DRUM BASIC 2

Measurements L x W x H	675 x 815 x 530 mm
Panel size	400 x 400 mm
Mesh size	120 m
Maximum flow	25.000 liter
Maximum pond content	40.000 liter
Maximum pond content koi	25.000 liter
Inlet	3x 110 mm
Outlet	2x 110 mm
Flush pump	internal Q800103
UVC built-in unit	40 Watt INOX

PATENT
PROTECTED
2025346

BASIC DRUM FILTERS

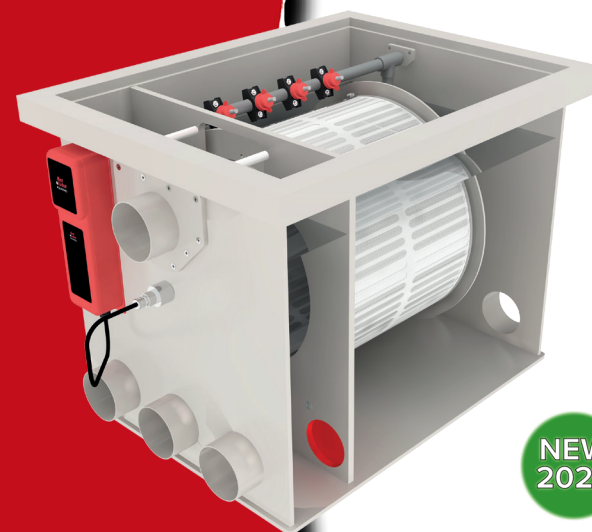
These drum filters are mechanical pre-filters that can filter very fine pollution (up to 120 microns) from a water stream in a simple way. The water flows gravity or pump fed into the filter and flows via the inside of the drum through the mesh cloth on which the dirt remains. With a certain degree of pollution, the gauze cloth will silt up, so that less water can pass through. As a result, the water level in the filter will drop on the outside of the gauze cloth.

When the water falls below a set level, it is "seen" by a float and a rinse cycle is initiated. A drive motor ensures that the drum starts to rotate, whereby the screen cloth is sprayed clean by a spray pump via nozzles. The nozzles spray the water with the dirt from the outside of the screen cloth into a drainage channel. This polluted water is discharged via the gutter to the sewer. The flow of the screen cloth is restored in this way, so that the water level in the filter rises. After this, the entire cycle repeats.

This system ensures that the water that leaves the filter does not contain dirt particles that are larger than the openings in the screen cloth, or 120 micrometers. The removal of even finer dirt particles is not desirable, as this adversely affects the biological filtering effect of the following elements of your filter line.

DRUM FILTER

F2010009



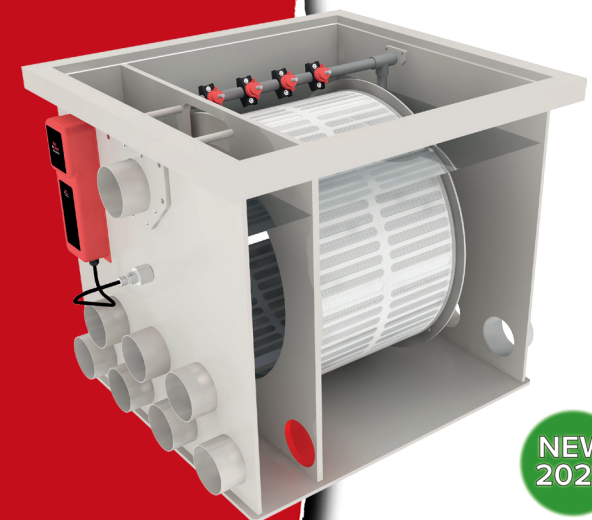
NEW
2022

BASIC DRUM 30/35

Measurements L x W x H	907 x 700 x 685 mm
Panel size	400 x 500 mm
Mesh size	120 m
Maximum flow	35.000 liter
Maximum pond content	70.000 liter
Maximum pond content koi	35.000 liter
Inlet	3x 110 mm
Outlet	3x 110 mm
Flush pump	internal Q800103
UVC built-in unit	40 Watt INOX

DRUM FILTER

F2010010



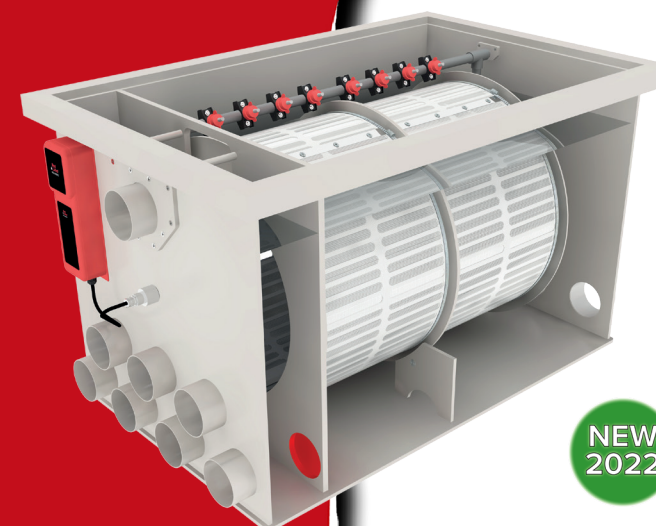
NEW
2022

BASIC DRUM 50/55

Measurements L x W x H	907 x 850 x 785 mm
Panel size	400 x 650 mm
Mesh size	120 m
Maximum flow	55.000 liter
Maximum pond content	110.000 liter
Maximum pond content koi	55.000 liter
Inlet	7x 110 mm
Outlet	4x 110 mm
Flush pump	internal Q800103
UVC built-in unit	40 Watt INOX

DRUM FILTER

F2100011

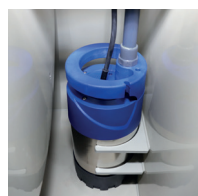


NEW
2022

BASIC DRUM 80/100

Measurements L x W x H	1430 x 850 x 785 mm
Panel size	2x 400 x 650 mm
Mesh size	120 m
Maximum flow	90.000 liter
Maximum pond content	180.000 liter
Maximum pond content koi	90.000 liter
Inlet	7x 110 mm
Outlet	4x 110 mm
Flush pump	internal stainless 5 bar
UVC built-in unit	40 Watt INOX

Supplied as standard with **BASIC LUXE** control box.



FEATURES:

- High-quality polypropylene
- Stainless steel screen 120 m
- Built-in flushing pump
- Built-in UVC unit INOX
- Including control box
- Float steered
- Adjustable rinse level
- Low water security
- Patented sealing
- Gutter brush system
- Includes cover
- Includes service desk
- Multi language manual
- 2-year warranty*
- Made in the Netherlands

BASIC COMBI FILTERS

The Red Label combi filter combines a drum filter, moving bed filter and possibly a mat chamber in one compact housing. The drum filter is a mechanical pre-filter that easily filters fine pollution (up to 120 microns) from a water flow.

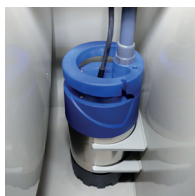
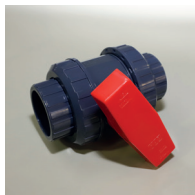
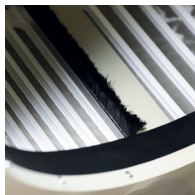
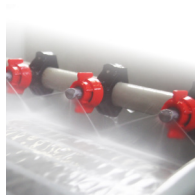
The BASIC combi filters have been designed to provide the necessary biological filtration as compactly as possible. The BASIC drum filter has been expanded in this model with a moving bed filter. After removing the coarse dirt through the drum filter, the water ends up in this moving bed filter, the biological filter. Here, harmful substances such as ammonia and nitrite are converted by bacteria into the 'harmless' nitrate.

If your situation requires more biological filtration, the BASIC combi filter with trickle filter offers a solution. An extension with high-quality filter mats is also possible by means of the BASIC COMBI 25/30 XL.

BASIC combi filters are available in both gravity and pump fed versions.



PATENT
PROTECTED
2025346



COMBI FILTER F2010004



MODEL
2022

BASIC COMBI 20/25 formerly COMBI BASIC 2

Measurements L x W x H	1400 x 1060 x 750 mm
Panel size	400 x 400 mm
Mesh size	120 m
Maximum flow	25.000 liter
Maximum pond content	50.000 liter
Maximum pond content koi	25.000 liter
Inlet	3x 110 mm
Outlet	2x 110 mm
Flush pump	internal Q800103
UVC built-in unit	40 Watt INOX
Air supply	2x 50 x 300 mm
Filter media optional	50 liter bwb HEL-X

COMBI FILTER F2090068



BASIC COMBI 25/30 XL formerly COMBI BASIC 2 XL

Measurements L x W x H	1550 x 1120 x 995 mm
Panel size	400 x 400 mm
Mesh size	120 m
Maximum flow	30.000 liter
Maximum pond content	60.000 liter
Maximum pond content koi	30.000 liter
Inlet	3x 110 mm
Outlet	2x 110 mm
Flush pump	internal Q800103
UVC built-in unit	40 Watt INOX
Air supply	2x 50 x 300 mm
Filter media optional	50 liter bwb HEL-X
	RED X cassette

FEATURES:

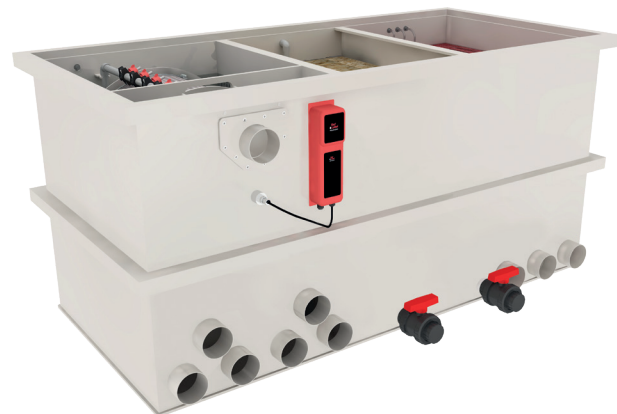
- High-quality polypropylene
- Stainless steel screen 120 m
- Built-in flushing pump
- Built-in UVC unit INOX
- Including control box
- Float steered
- Adjustable rinse level
- Low water security
- Patented sealing
- Gutter brush system
- Includes cover
- Includes service desk
- Multi language manual
- 2-year warranty*
- Made in the Netherlands

BASIC COMBI FILTERS

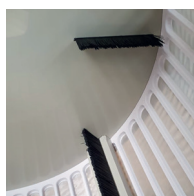
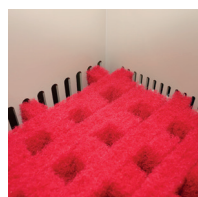
We offer all qualities and more of the BASIC filters, also for larger to very large ponds. These large BASIC combi filters are equipped with the latest innovations and latest technology. These filters are equipped with an extra large drum filter with a sieve panel with a mesh size of 120 m.

These very generously sized BASIC combi filters are equipped with our patented unique drum filter sealing system. The filter is standard equipped with a 40 Watt INOX UVC built-in unit, but can also be easily upgraded to an 80 Watt INOX built-in unit. A protective cover prevents the UV light from acting on the seal of the drum, thus guaranteeing a long life. The unique double brush system in the drum filter ensures that the dirt discharge channel is kept clean, so that the filter system has become even more maintenance-free.

The BASIC combi plus and combi XXL filter have a larger space for the biological filter and, in addition to a moving bed filter, are equipped with a spacious matting room.



PATENT
PROTECTED
2025346



COMBI FILTER

F2010006



MODEL
2022

BASIC COMBI 50/60

formerly COMBI BASIC 500

Measurements L x W x H	1825 x 1168 x 1015 mm
Panel size	400 x 650 mm
Mesh size	120 m
Maximum flow	60.000 liter
Maximum pond content	100.000 liter
Maximum pond content koi	50.000 liter
Inlet / outlet	6x 110 mm / 3x 110 mm
Flush pump	internal Q800103
UVC built-in unit	40 Watt INOX
Filter media optional	100 liter bwb HEL-X

COMBI FILTER

F2010007



MODEL
2022

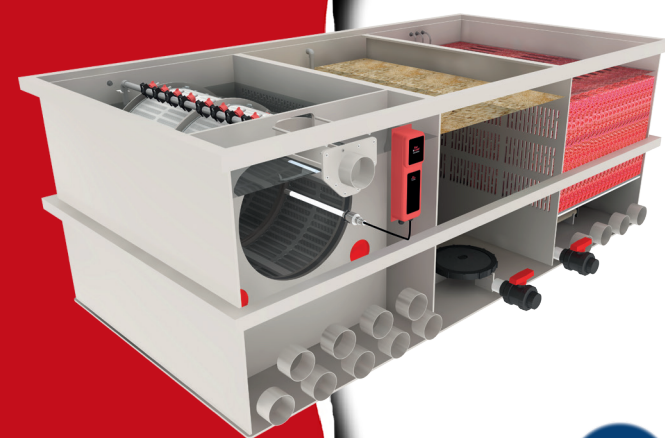
BASIC COMBI 50/60 PLUS

COMBI BASIC 500 plus

Measurements L x W x H	2110 x 1168 x 1015 mm
Panel size	400 x 650 mm
Mesh size	120 m
Maximum flow	60.000 liter
Maximum pond content	120.000 liter
Maximum pond content koi	60.000 liter
Inlet / outlet	6x 110 mm / 3x 110 mm
Flush pump	internal Q800103
UVC built-in unit	40 Watt INOX
Filter media optional	100 liter bwb HEL-X
	RED X cassette

COMBI FILTER

F2010008



MODEL
2022

BASIC COMBI 80/100 XXL

COMBI BASIC 500 XXL

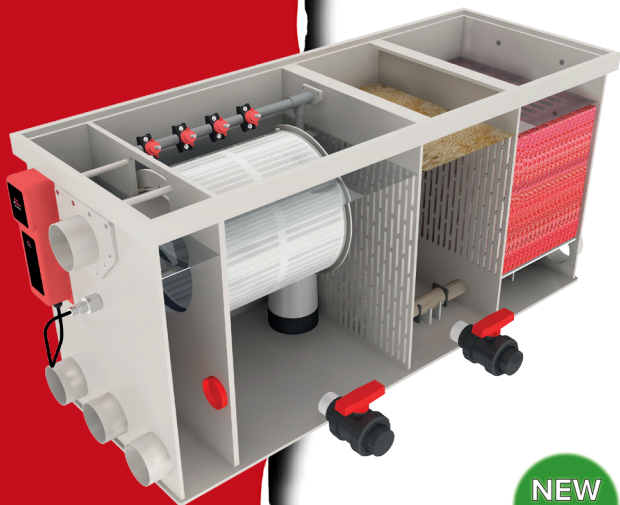
Measurements L x W x H	2760 x 1589 x 1015 mm
Panel size	800 x 650 mm
Mesh size	120 m
Maximum flow	100.000 liter
Maximum pond content	200.000 liter
Maximum pond content koi	100.000 liter
Inlet / outlet	9x 110 mm / 4x 110 mm
Flush pump	Intern RVS 5 bar
UVC built-in unit	40 Watt INOX
Filter media optional	100 liter bwb HEL-X
	RED X cassette

Supplied as standard with BASIC LUXE control box.

FEATURES:

- High-quality polypropylene
- Stainless steel screen 120 m
- Built-in flushing pump
- Built-in UVC unit INOX
- Including control box
- Float steered
- Adjustable rinse level
- Low water security
- Patented sealing
- Gutter brush system
- Includes cover
- Includes service desk
- Multi language manual
- 2-year warranty*
- Made in the Netherlands

COMBI FILTER
F2010013



NEW
2022

INLINE COMBI 20/25 LOW

Measurements L x W x H	1690 x 620 x 750 mm
Panel size	400 x 400 mm
Mesh size	120 m
Maximum flow	25.000 liter
Maximum pond content	50.000 liter
Maximum pond content koi	25.000 liter
Inlet	3x 110 mm
Outlet	2x 110 mm
Flush pump	internal Q800103
UVC built-in unit	40 Watt INOX
Filter media optional	50 liter bwb HEL-X RED-X cassette

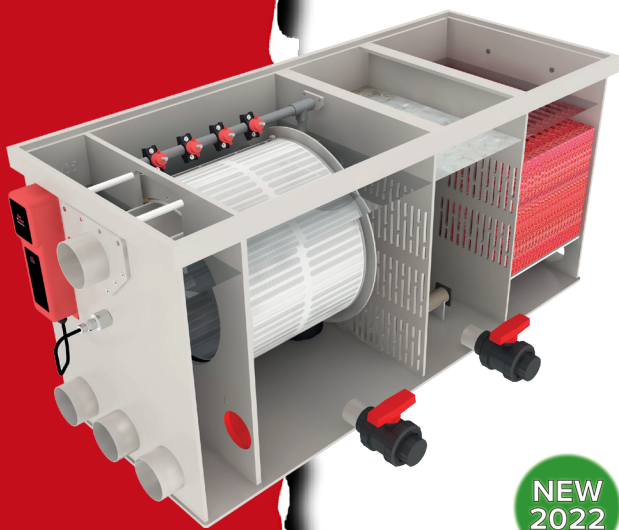


INLINE COMBI FILTERS

In 2022 we will introduce a completely new series of filters, the INLINE COMBI filters. The name says it all, the different filter chambers are connected 'in line'. This brings several advantages. The flow through the filter has been further optimized in combination with the milled panels. Due to the length of the INLINE COMBI filters, these models are ideal for replacing most existing chamber filters. The INLINE COMBI filter series consists of 2 models of more than one meter high and of 2 low models. The INLINE COMBI LOW filters are only 75 cm high and therefore suitable for many existing shallower filter rooms. The width of the INLINE COMBI filters has also been taken into account, so that the filter fits easily through most doors, so easy!

Thanks to our custom work, the INLINE COMBI filters can be adjusted as desired with various options.

COMBI FILTER
F2010014



NEW
2022

INLINE COMBI 30/35 LOW

Measurements L x W x H	1762 x 640 x 750 mm
Panel size	400 x 500 mm
Mesh size	120 m
Maximum flow	30.000 liter
Maximum pond content	60.000 liter
Maximum pond content koi	30.000 liter
Inlet	3x 110 mm
Outlet	2x 110 mm
Flush pump	internal Q800103
UVC built-in unit	40 Watt INOX
Filter media optional	50 liter bwb HEL-X RED X cassette

COMBI FILTER
F2010015



NEW
2022

INLINE COMBI 30/35

Measurements L x W x H	2232 x 700 x 1005 mm
Panel size	400 x 500 mm
Mesh size	120 m
Maximum flow	35.000 liter
Maximum pond content	70.000 liter
Maximum pond content koi	35.000 liter
Inlet	3x 110 mm
Outlet	2x 110 mm
Flush pump	internal Q800103
UVC built-in unit	40 Watt INOX
Filter media optional	100 liter bwb HEL-X RED X cassette

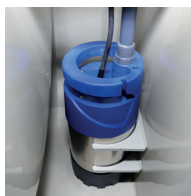
COMBI FILTER
F2010016



NEW
2022

INLINE COMBI 50/55

Measurements L x W x H	2232 x 850 x 1005 mm
Panel size	400 x 650 mm
Mesh size	120 m
Maximum flow	55.000 liter
Maximum pond content	110.000 liter
Maximum pond content koi	55.000 liter
Inlet	7x 110 mm
Outlet	4x 110 mm
Flush pump	internal Q800103
UVC built-in unit	40 Watt INOX
Filter media optional	100 liter bwb HEL-X RED X cassette



FEATURES:

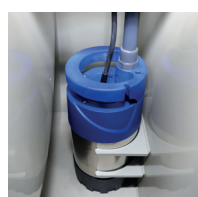
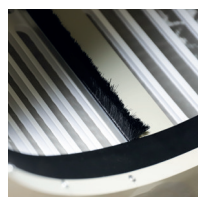
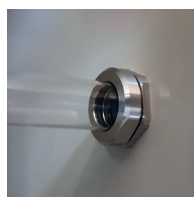
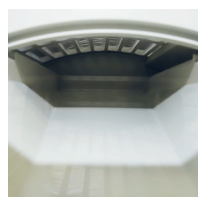
- High-quality polypropylene
- Includes cover
- Includes service desk
- 2-year warranty
- Made in the Netherlands

BASIC TRICKLE FILTERS

Red Label trickle filters can be provided with almost any desired filter material. These trickle filters have the best biological filtering effect of all known filters for koi ponds. In addition, a very large oxygen-increasing effect takes place. Harmful substances are converted very quickly in these trickle filters.

To make it easier to use a trickle filter in combination with our Red label Combi filters, we have now also included BASIC trickle filters in our range. These trickle filters are made to measure and optimally applicable to our BASIC combi models JOY and HAPPY.

When purchasing a BASIC TRICKLE for your existing JOY or HAPPY combi, we will exchange the current lids for a new suitable lid for FREE.



TRICKLE FILTER

F2060011

BASIC TRICKLE COMBI 20/25

Measurements L x W x H	995 x 850 x 785 mm
Total height incl. filter	1515 mm
Maximum flow	20.000 liter
Inlet	1x 63 mm
Outlet	Bottom grid



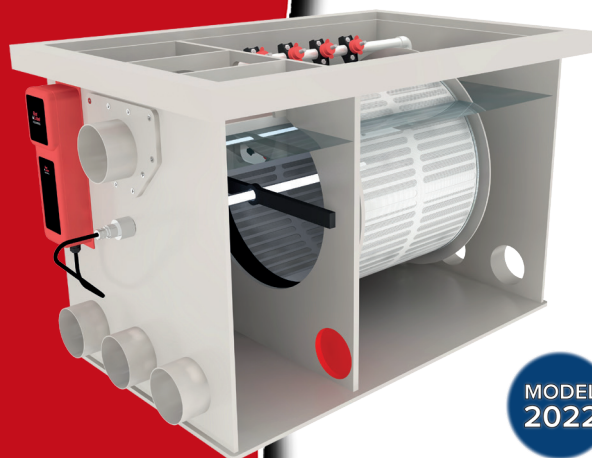
Now including Cristal Bio filter media.

FEATURES:

- High-quality polypropylene
- Stainless steel screen 70 m
- Built-in flushing pump
- Built-in UVC until INOX
- Including control box PRO
- Pressure sensor steered
- Adjustable rinse level
- Low water security
- Includes cover
- Cover security
- Includes service desk
- Multi language manual
- 2-year warranty*
- Made in the Netherlands

DRUM FILTER

F2030009



MODEL
2022

PRO DRUM 30/35 XL

Measurements L x W x H	1230 x 700 x 685 mm
Panel size	400 x 500 mm
Mesh size	70 m
Maximum flow	40.000 liter
Maximum pond content	80.000 liter
Maximum pond content koi	35.000 liter
Inlet	3x 110 mm
Outlet	3x 110 mm
Flush pump	Internal RVS 5 bar
UVC built-in unit	1x 80 Watt INOX

PATENT
PROTECTED
2025346

PRO DRUM FILTERS XL

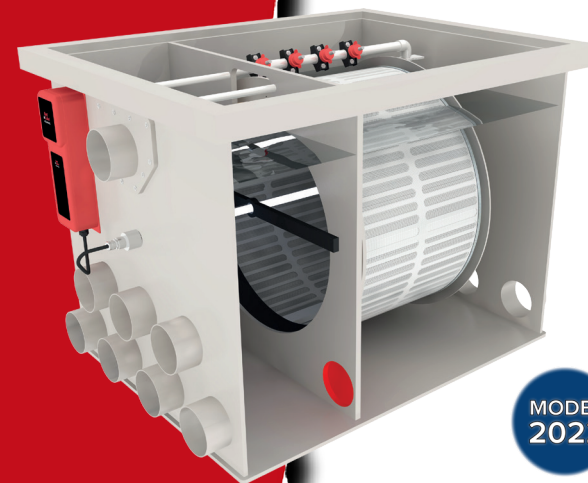
A drum filter, also known as a rotary drum filter, is a mechanical pre-filter that can easily filter very fine contamination (up to 70 microns) from a water flow. The water flows gravity or pump fed into the filter and goes through the inside of the drum through the mesh cloth where the dirt remains. With a certain degree of contamination, the mesh cloth will silt up, so that less water will pass through. As a result, the water level in the filter on the outside of the gauze cloth drops.

When the water falls below a set level, this is 'detected' by a pressure sensor and a rinsing cycle is initiated. A drive motor ensures that the drum starts to rotate, whereby the screen cloth is sprayed clean via nozzles by a of 5-bar spray pump. The nozzles spray the water with the dirt from the outside of the sieve into a drainage channel. This contaminated water is discharged to the sewer through the gutter. The flow through the screen cloth is restored in this way, so that the water level in the filter rises. After this, the entire cycle repeats itself.

This system ensures that the water leaving the filter doesn't contain dirt particles that are larger than the openings in the screen cloth, i.e. 70 micrometres. Removing even finer dirt particles is not desirable because it adversely affects the biological filtering effect of the following elements of your filter line.

DRUM FILTER

F2030008



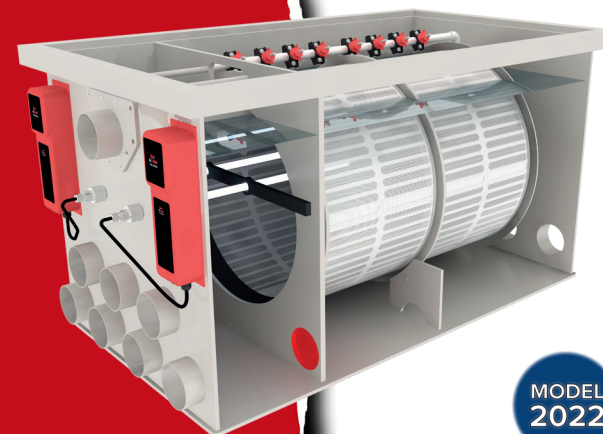
MODEL
2022

PRO DRUM 50/55 XL

Measurements L x W x H	1230 x 850 x 785 mm
Panel size	400 x 650 mm
Mesh size	70 m
Maximum flow	60.000 liter
Maximum pond content	120.000 liter
Maximum pond content koi	55.000 liter
Inlet	7x 110 mm
Outlet	4x 110 mm
Flush pump	Intern RVS 5 bar
UVC built-in unit	1x 80 Watt INOX

DRUM FILTER

F2030007



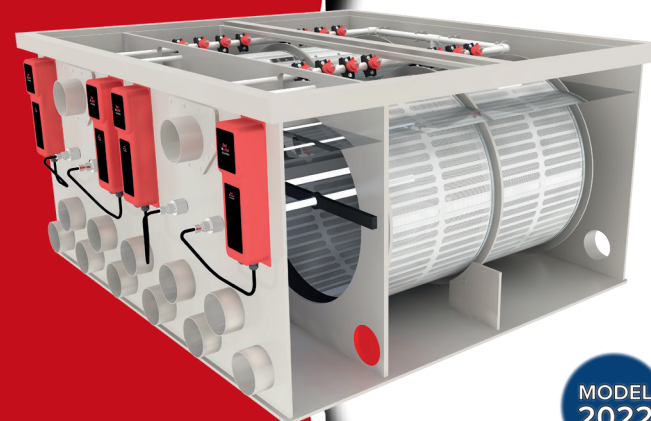
MODEL
2022

PRO DRUM 80/100 XL

Measurements L x W x H	1615 x 850 x 785 mm
Panel size	800 x 650 mm
Mesh size	70 m
Maximum flow	95.000 liter
Maximum pond content	190.000 liter
Maximum pond content koi	85.000 liter
Inlet	7x 110 mm
Outlet	4x 110 mm
Flush pump	Internal RVS 5 bar
UVC built-in unit	2x 80 Watt INOX

DRUM FILTER

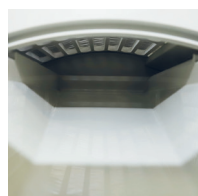
F2030005



MODEL
2022

PRO DRUM 100/200 XL

Measurements L x W x H	1615 x 1570 x 785 mm
Panel size	2x 650 x 800 mm
Mesh size	70 m
Maximum flow	180.000 liter
Maximum pond content	360.000 liter
Maximum pond content koi	160.000 liter
Inlet	11x 110 mm
Outlet	6x 110 mm
Flush pump	Internal RVS 7 bar
UVC built-in unit	4x 80 Watt INOX



FEATURES:

- High-quality polypropylene
- Stainless steel screen 70 m
- Built-in flushing pump
- Built-in UVC unit INOX
- Including control box PRO
- Pressure sensor steered
- Adjustable rinse level
- Low water security
- HEL-X bio carrier 955 m²/m³
- REDX filter mats cassette
- Includes air tubes
- Includes cover
- Cover security
- Includes service desk
- Multi language manual
- 2-year warranty*
- Made in the Netherlands

PRO COMBI FILTERS XL

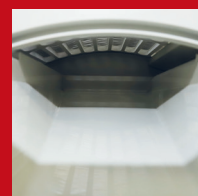
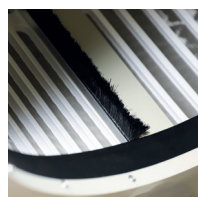
The Red Label PRO COMBI XL filter combines a drum filter, a moving bed filter and a mat chamber in one compact housing. The drum filter is a mechanical pre-filter that easily filters very fine pollution (up to 70 microns) from a water flow. The filter consists of very high-quality materials, such as stainless steel and polypropylene (PP) and aims to guarantee perfect water quality in a simple and reliable way.

After removing the coarse dirt through the drum filter, the water ends up in the moving bed filter and mat chamber, these are the biological filters. Here, harmful substances such as ammonia and nitrite are converted by bacteria into the 'harmless' nitrate.

The PRO COMBI XL has an extra large receiving chamber. This creates a more stable water supply and a higher flow is possible. The installation of UVC units with a longer length is possible in the XL version. The drainage channel and the drum are also easier to access, which greatly facilitates maintenance.

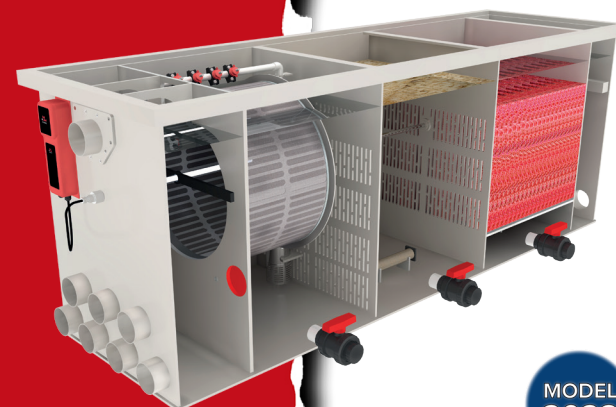


PATENT
PROTECTED
2025346



COMBI FILTER

F2040008



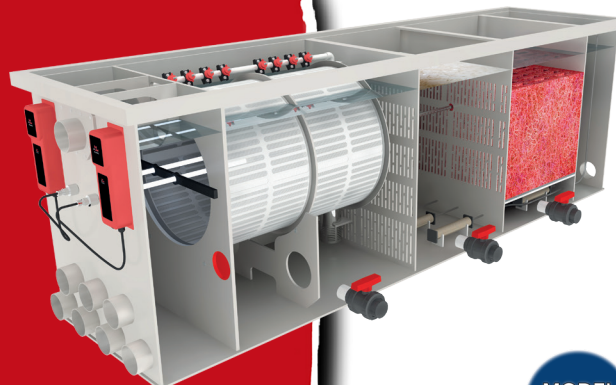
MODEL
2022

PRO COMBI 50/55 XL

Measurements L x W x H	2861 x 850 x 1005 mm
Panel size	400 x 650 mm
Mesh size	70 m
Maximum flow	55.000 liter
Maximum pond content	110.000 liter
Maximum pond content koi	55.000 liter
Inlet	7x 110 mm
Outlet	4x 110 mm
Flush pump	Internal RVS 5 bar
UVC built-in unit	1x 80 Watt INOX
Aeration	2x 50 x 300 mm
Bio carrier	100 liter HEL-X
Filter mats	RED X cassette

COMBI FILTER

F2040004



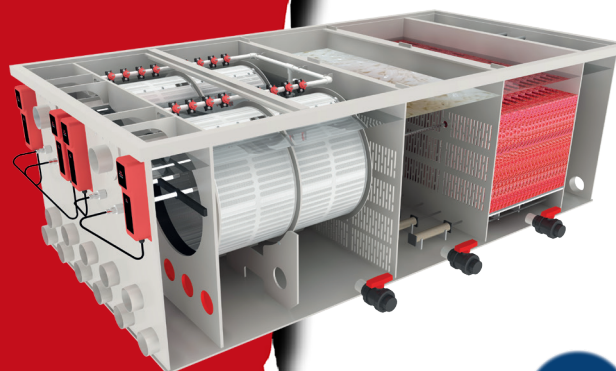
MODEL
2022

PRO COMBI 80/100 XL

Measurements L x W x H	3235 x 850 x 1005 mm
Panel size	800 x 650 mm
Mesh size	70 m
Maximum flow	90.000 liter
Maximum pond content	180.000 liter
Maximum pond content koi	90.000 liter
Inlet	7x 110 mm
Outlet	4x 110 mm
Flush pump	Internal RVS 5 bar
UVC built-in units	2x 80 Watt INOX
Aeration	4x 50 x 300 mm
Bio carrier	200 liter HEL-X
Filter mats	RED X cassette

COMBI FILTER

F2040005



MODEL
2022

PRO COMBI 100/200 XL

Measurements L x W x H	3280 x 1570 x 1010
Panel size	2x 800 x 650 mm
Mesh size	70 m
Maximum flow	180.000 liter
Maximum pond content	360.000 liter
Maximum pond content koi	180.000 liter
Inlet	11x 110 mm
Outlet	6x 110 mm
Flush pump	Internal RVS 7 bar
UVC built-in units	4x 80 Watt INOX
Aeration	8x 50 x 300 mm
Bio carrier	400 liter HEL-X
Filter mats	RED X cassette

FEATURES:

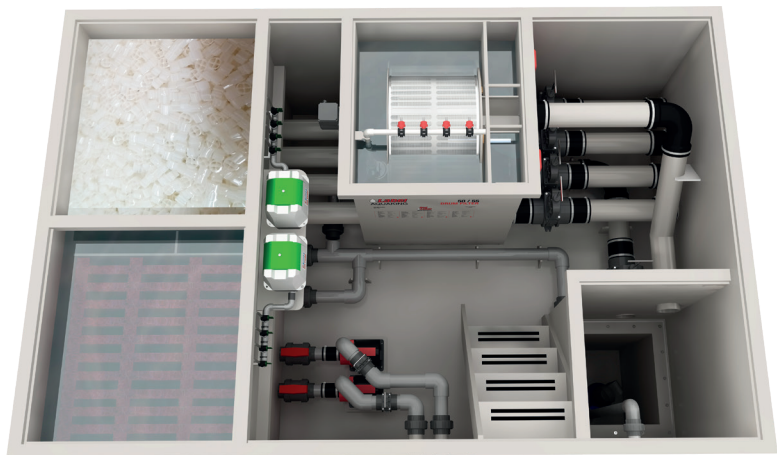
- High-quality polypropylene
- Stainless steel screen 70 m
- Built-in flushing pump
- Built-in UVC unit INOX
- Including control box PRO
- Pressure sensor steered
- Adjustable rinse level
- Low water security
- HEL-X bio carrier 955 m²/m³
- REDX filter mats cassette
- Includes air tubes
- Includes cover
- Cover security
- Includes service desk
- Multi language manual
- 2-year warranty*
- Made in the Netherlands

PRO COMBI FILTER PIT

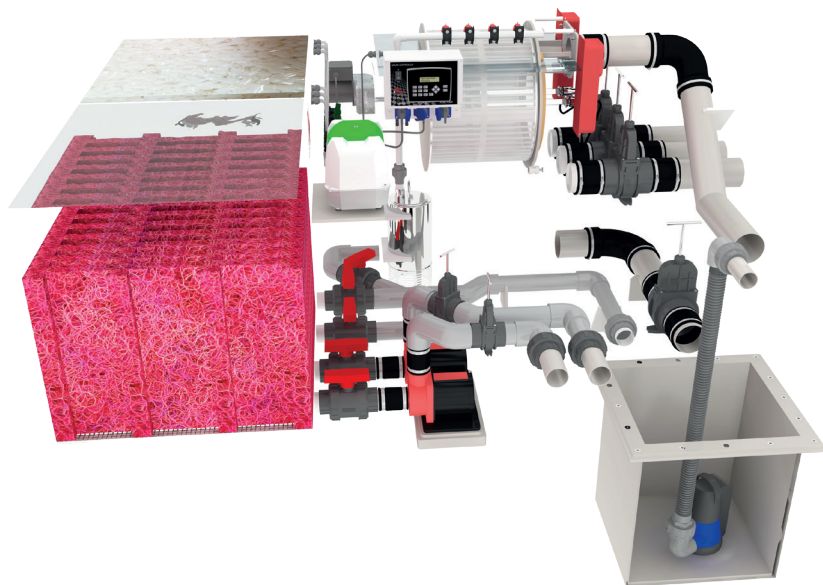
Combining all Red Label options in an ergonomic total solution, anything is possible! For example, we have complete Plug & Play filter wells in our range. Models shown are fully equipped with the highest quality Red Label filter installations. Equipped with the latest developments and a detailed finish, this is the most ultimate filter system on the market.

If you have specific wishes with regard to the design of these Plug & Play filter chambers, these can of course also be realised.

The Red Label team is ready for you!



PATENT
PROTECTED
2025346



COMBI FILTER

F2110001



MODEL
2022

COMBI FILTER

F2110002



MODEL
2022

PRO COMBI PIT 30/35

Measurements L x W x H	2350 x 1760 x 1030 mm
Panel size	400 x 500 mm
Mesh size	70 m
Maximum flow	35.000 liter
Maximum pond content	70.000 liter
Maximum pond content koi	35.000 liter
Inlet	3x 110 mm
Outlet	2x 2" 63 mm
Flush pump	Internal RVS 5 bar
Aeration	4x 50 x 300 mm
Bio carrier	100 liter HEL-X
Filter mats	RED X cassette
Supply and return	optional

PRO COMBI PIT 50/55

Measurements L x W x H	2900 x 1900 x 1010 mm
Panel size	400 x 650 mm
Mesh size	70 m
Maximum flow	55.000 liter
Maximum pond content	110.000 liter
Maximum pond content koi	55.000 liter
Inlet	4x 110 mm
Outlet	3x 2" 63 mm
Flush pump	Internal RVS 5 bar
Aeration	4x 50 x 300 mm
Bio carrier	100 liter HEL-X
Filter mats	RED X cassette
Supply and return	optional

FEATURES:

- High-quality polypropylene
- Stainless steel screen 70 m
- Built-in flushing pump
- Built-in UVC unit INOX
- Including control box PRO
- Pressure sensor steered
- Adjustable rinse level
- Low water security
- HEL-X bio carrier 955 m²/m³
- REDX filter mats cassette
- Includes air tubes
- Includes cover
- Cover security
- Includes service desk
- Multi language manual
- 2-year warranty*
- Made in the Netherlands

PRO LEAF FILTER

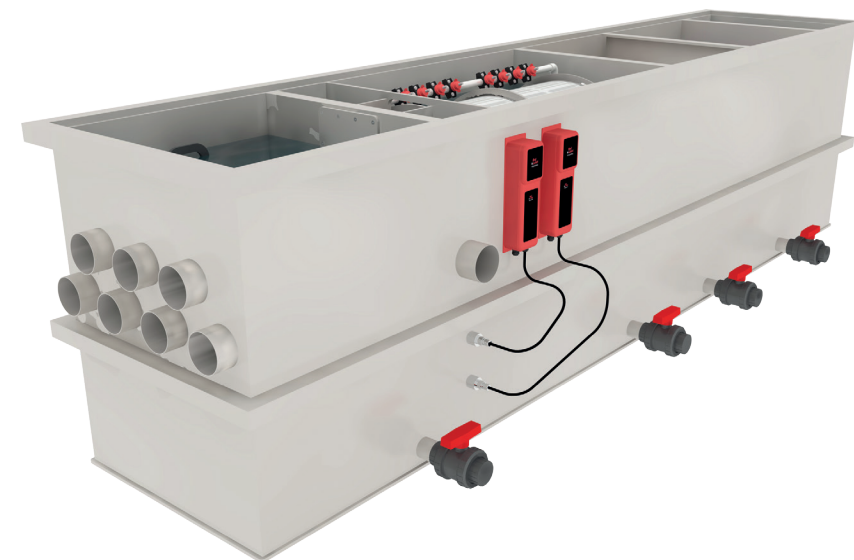
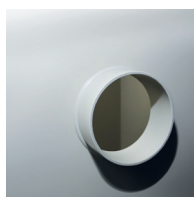
Drum filters remove virtually all water contamination from your pond system through a drainage channel. Large contaminants such as twigs, leaves or thread algae can remain in the drum or even clog the discharge gutter. This can often be prevented by manually removing such waste. In ponds that are located in a wooded area, the amount of waste can be such that it hinders the regular operation of the filter system. Ponds that are ground level can also experience excessive nuisance from waste blowing in. The Red Label Leaf Filter has been developed for such situations.

The leaf collector is equipped with a collection tray in which all the coarse dirt that is supplied by your bottom drains and skimmers remains. Smaller debris will pass through and drain through the drum filter drain chute. When necessary, the solid collector can be easily removed for emptying. The operation of the total filter system can no longer be interrupted by said coarse waste.

The leaf filter is supplied as a separate unit or as an integrated part of a combi drum system. Ask about the possibilities to expand your system with a Red Label Leaf Filter.

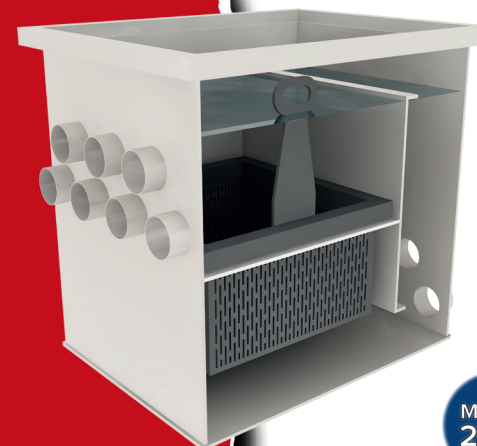


PATENT
PROTECTED
2025346



LEAF FILTER

F2080002



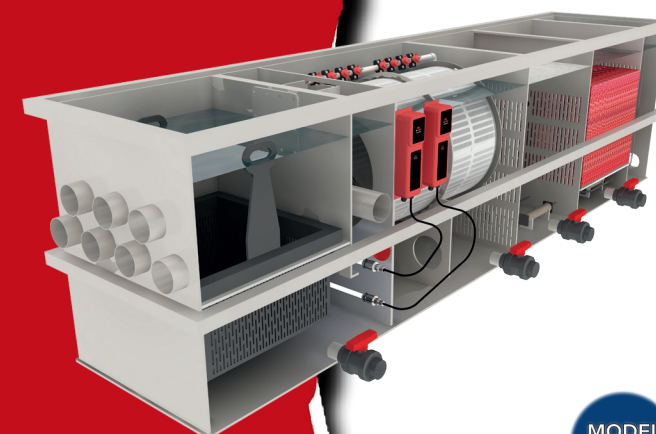
MODEL
2022

PRO LEAF FILTER 80/100

Measurements L x W x H	1100 x 850 x 1005 mm
Maximum flow	90.000 liter
Maximum pond content	180.000 liter
Maximum pond content koi	90.000 liter
Inlet	7x 110 mm
Outlet	7x 110 mm

COMBI FILTER

F2080004



MODEL
2022

PRO COMBI 80/100 XL LEAF FILTER

Measurements L x W x H	3860 x 850 x 1005 mm
Panel size	800 x 650 mm
Mesh size	70 m
Maximum flow	90.000 liter
Maximum pond content	180.000 liter
Maximum pond content koi	90.000 liter
Inlet	7x 110 mm
Outlet	4x 110 mm
Flush pump	Intern RVS 5 bar
UVC built-in units	2x 80 Watt INOX
Aeration	4x 50 x 300 mm
Bio carrier	200 liter HEL-X
Filter mats	RED X cassette

FEATURES:

- High-quality polypropylene
- Includes cover
- Includes service desk
- 2-year warranty
- Made in the Netherlands

PRO TRICKLE FILTERS

Red Label trickle filters consist of separate units that you can be provided with any desired filter material. These trickle filters have the best biological filter effect of all known filters for koi ponds. In addition, there is a very high oxygen-increasing effect. Harmful substances are converted super fast in these trickle filters.

To facilitate the application of a trickle filter in combination with our Red label Combi filters, we have included the PRO BIG COMBI in our range. This trickle filter is precisely tailored and optimally applicable to our combination filter models 30/35 and 50/55. Thanks to the customisation that we provide, you can choose any desired outlet on your trickle filter in consultation.

TRICKLE FILTER

F2060006



PRO BIG COMBI

Measurements L x W x H	1473 x 374 x 1200mm
Maximum flow	30.000 liter
Inlet	1x 2" 63 mm
Outlet	1x 110 mm
Spray bars	2x 63 mm
Suitable for:	Combi filter 30/35 Combi filter 50/55

When purchasing a PRO BIG COMBI for your existing combination filter 30/35 or 50/55, we will exchange the current cover for FREE for a new suitable set.

MODEL
2022



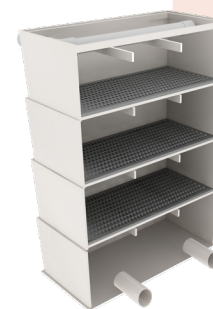
Cristal Bio filter media optional.



TRICKLE FILTER

F2060001

F2060002



Cristal Bio filter media optional.

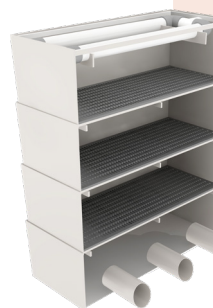
PRO SMALL

Measurements L x W x H	665 x 320 x 942 mm
Maximum flow	15.000 liter
Inlet	1x 1½" 50 mm
Outlet F2060001	2x 63 mm
Outlet F2060002	waterfall
Content	145 liter

TRICKLE FILTER

F2060003

F2060004



Cristal Bio filter media optional.

PRO BIG

Measurements L x W x H	1060 x 420 x 1200mm
Maximum flow	20.000 liter
Inlet	1x 2" 63 mm
Outlet F2060003	3x 110 mm
Outlet F2060004	waterfall
Content	330 liter

TRICKLE FILTER

F2060009



PRO WATERFALL

Measurements L x W x H	1000 x 720 x 1260mm
Maximum flow	30.000 liter
Inlet	1x 2" 63 mm
Outlet	waterfall
Content	315 liter



Cristal Bio filter media optional.

FEATURES:

- High-quality polypropylene
- Stainless steel screen 70 m
- Built-in flushing pump
- Built-in UVC unit INOX
- Including control box PRO
- Pressure sensor steered
- Adjustable rinse level
- Low water security
- HEL-X bio carrier 955 m²/m³
- REDX filter mats cassette
- Includes air tubes
- Includes cover
- Cover security
- Includes service desk
- Multi language manual
- 2-year warranty*
- Made in the Netherlands

CUSTOM WORK

Every specific situation requires a suitable solution. If our very wide range does not match your circumstances, we can still offer you a solution in almost all cases. In consultation with our advisors, you can realize the most extreme filter wishes. From installing an extra input or output on your drum filter to compiling a filter system completely according to your wishes.

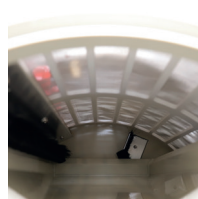
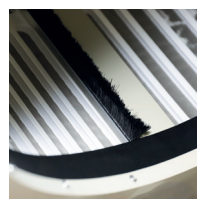
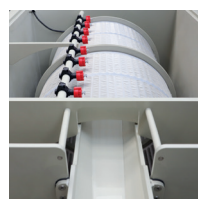
The Red Label Plug & Play installation is designed in such a way that the complete system can be easily connected to the pond. The complete water balance is then immediately taken care of in the best possible way.

A pond filter system is preferably placed in an accessible filter space. In most cases, a filter pit is used where a filter line is installed in a gravity setup. In addition to the necessary filter units such as drum filter or combination filter, things such as connections, pipes and pumps usually take up a lot of space. The Red Label Plug & Play XL systems provide a complete filter line. One compact housing, especially for ponds with a high load.

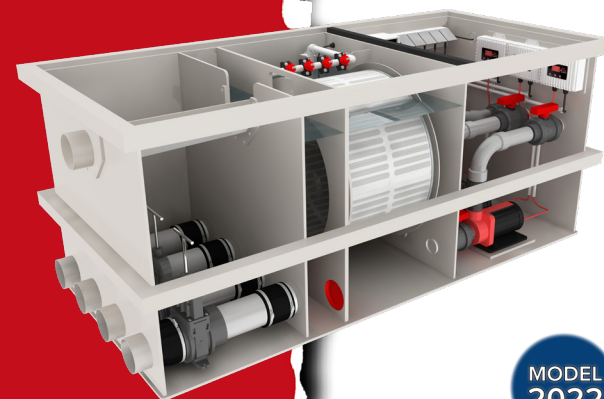
All necessary equipment is incorporated in this filter installation. Your pond water flows through the compact receiving chamber with sliding valves to the drum filter in the second chamber for mechanical filtration. The third space is equipped with a moving bed filter that ensures the biological decomposition of waste. The fourth chamber features the high-quality RED-X filter mats to provide additional biological filtration. The purified water is pumped back to your pond from the fifth chamber. This fifth filter chamber is also equipped with the complete control of the Plug & Play system. In the unlikely event that water collects in the fifth space, it will be pumped out by the built-in automatic submersible pump.

We recommend that the complete installation of Plug & Play systems be assembled in our factory with the products recommended by us and fully tailored according to the system. If you prefer to assemble other materials yourself, the first and last filter chamber will be delivered empty.

PATENT
PROTECTED
2025346



COMBI FILTER



MODEL
2022

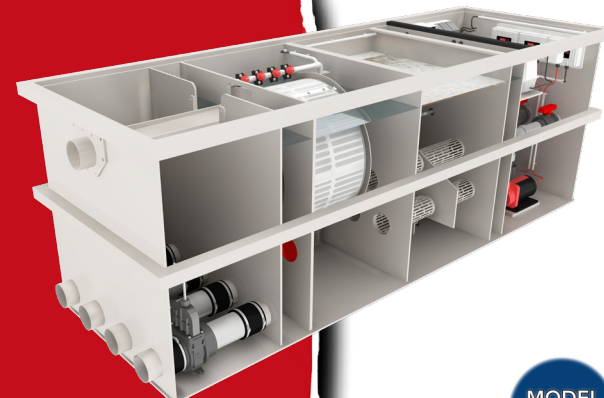
PRO DRUM FILTERS M

Model	30/35 F2070001
Measurements L x W x H	2025 x 820 x 830 mm
Maximum flow	35.000 liter

Model	50/55 F2070004
Measurements L x W x H	2025 x 950 x 830 mm
Maximum flow	55.000 liter

Model	75/100 F2070007
Measurements L x W x H	2035 x 1100 x 830 mm
Maximum flow	90.000 liter

COMBI FILTER



MODEL
2022

PRO COMBI FILTERS L

Model	30/35 F2070002
Afmetingen L x B x H	2900 x 800 x 1005 mm
Maximale doorstroming	35.000 liter

Model	50/55 F2070005
Measurements L x W x H	2900 x 1000 x 1005 mm
Maximum flow	55.000 liter

Model	75/100 F2070008
Measurements L x W x H	3285 x 1000 x 1005 mm
Maximum flow	90.000 liter

COMBI FILTER



MODEL
2022

PRO COMBI FILTERS XL

Model	30/35 F2070003
Measurements L x W x H	3500 x 800 x 1005 mm
Maximum flow	35.000 liter

Model	50/55 F2070006
Measurements L x W x H	3500 x 1000 x 1005 mm
Maximum flow	55.000 liter

Model	75/100 F2070009
Measurements L x W x H	3895 x 1000 x 1005 mm
Maximum flow	90.000 liter

FEATURES:

- High-quality polypropylene
- HEL-X bio carrier 955 m²/m³
- 2-year warranty
- Made in the Netherlands

PROTEIN SKIMMER

The Red Label protein skimmer is a side filter that combines the biological effect of a trickle filter with a mechanical filter. The water falls through the filter filled with Bio carrier while adding air. The Bio carrier forms a biofilm that contributes to biological filtration. Foam forms at the bottom of the filter and is forced out of the drain by means of gravity. Large amounts of waste are stored in the foam and removed from your pond water.

Foam on your pond water is formed by proteins that are in your fish food. The Red Label protein skimmer ensures that these excess proteins are removed. In addition, this removes waste such as heavy metals, acids, ammonia, phosphates and dyes. The Red Label protein skimmer thus ensures colourless, clear, foam-free and healthy pond water.

BOTTOM DRAINS

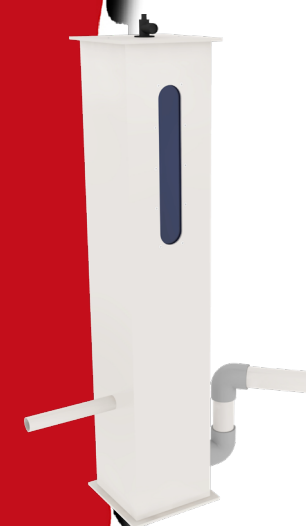
The most commonly used bottom drains are provided with a dome-shaped cover. Over time, these drains sometimes come loose in a koi pond. Reapplication is not always easy. In addition, koi can be damaged if they move along such a drain. Such drains are also not desirable in a swimming pool or swimming pond. You could get hurt on the protruding drain or the drain will break when you step on it.

To overcome the above problems Red Label has developed a new type of drain. These indestructible drains have a large diameter so that dirt is optimally discharged. For koi ponds, Red Label bottom drains are also available in aerated versions. An aerated bottom drain attracts dirt so that it is more efficiently discharged to the filter system.



PROTEIN SKIMMER

F2060008



PRO BIG

Measurements L x W x H	265 x 265 x 1280 mm
Maximum flow	6.500 liter
Inlet	1x 1" 32 mm
Outlet	50 mm

BOTTOM DRAIN

O1120051



PRO 300

Diameter	300 mm
Outlet	110 mm
Available versions	Aerated, non-aerated

MODEL
2022

BOTTOM DRAIN



PRO 400

Diameter	400 mm
Article	Outlet
O1120052 with grid	2x 110 mm
O1120053 with grid	1x 125 mm
O1120054 with grid	1x 160 mm
O1120055 with lid	2x 110 mm
O1120056 with lid	1x 160 mm
O1120057 with lid	2x 125 mm
Available versions	Aerated, non-aerated

MODEL
2022

FEATURES:

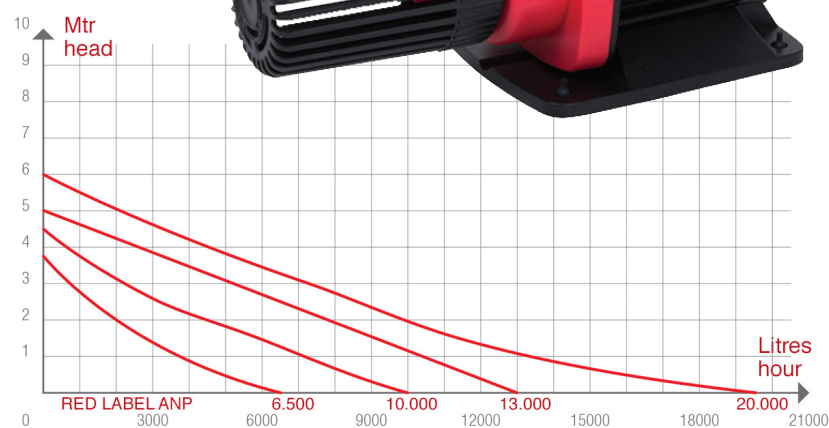
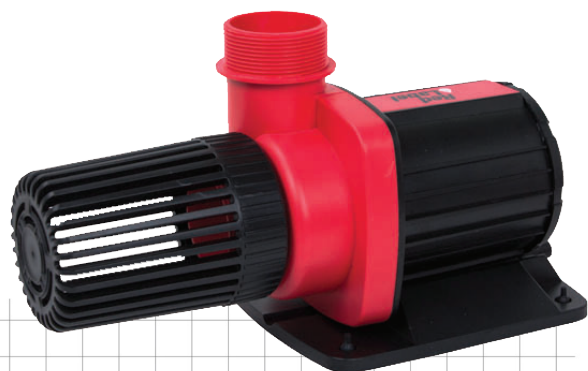
- Energy efficient
- Environmentally friendly
- Safe operation
- Simple usage
- Adjustable flow
- High capacity
- Long lifespan
- Wet or dry setup
- Includes couplings
- 2-year warranty

ANP POND PUMPS

Aquaking Red Label supplies the optimal pond pump for every desired application. The most commonly used pond pump is the ANP, Amphibious Naked Pump. This pump is often used in gravity set-ups where the pump pumps the water from the filter back to the pond. The Red Label ANP can be installed both dry (below water level) and wet. These pumps can of course be used with our Red Label filter solutions, but also with any other conceivable filter system. The Red Label ANP pump is equipped with an adjustable electronic control which enables you to continuously adjust the capacity of the pump. Very easy to reduce your flow in the pond in winter, for example.

Red Label pumps are extremely energy efficient and even rank as the most efficient in their price range. The pump is easy to adjust thanks to the included accessories. ANP pumps have a high flow, are safe, very easy to use and have a long service life.

The pump is supplied as a complete kit with an electronic controller and couplings that simplify the connection of the pump.



ANP POND PUMP

W1060039



6500

Capacity	6.500 l/h
Power	4 - 38 Watt
Pressure	3,8 mwc
Inlet/Outlet	1 1/2" 50 mm

ANP POND PUMP

W1060040

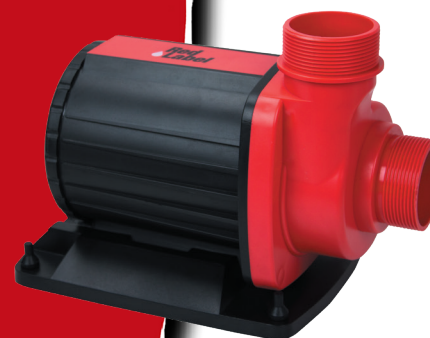


10000

Capacity	10.000 l/h
Power	4 - 78 Watt
Pressure	4,5 mwc
Inlet/Outlet	1 1/2" 50 mm

ANP POND PUMP

W1060041

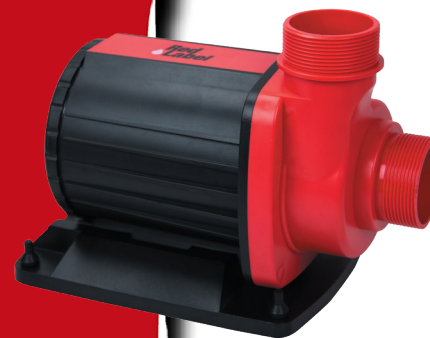


13000

Capacity	13.000 l/h
Power	4 - 125 Watt
Pressure	5,0 mwc
Inlet/Outlet	2" 63 mm

ANP POND PUMP

W1060042



20000

Capacity	20.000 l/h
Power	4 - 200 Watt
Pressure	6,0 mwc
Inlet/Outlet	2" 63 mm

FEATURES:

- Energy efficient
- Environmentally friendly
- Safe operation
- Simple usage
- Adjustable flow
- High capacity
- Long lifespan
- Wet or dry setup
- Includes couplings
- 2-year warranty

ACP POND PUMPS

Aquaking Red Label supplies the optimal pond pump for every desired application. A frequently used pump is the ACP, Amphibious Cased Pump. The Red Label ACP pump has a housing that stops dirt, so this pump is specifically used under water. This pump is often used in pump-fed setups where the pump is located in the pond. These pumps can of course be used with our Red Label filter solutions, as well as with any other conceivable filter system. The Red Label ACP pump is equipped with an adjustable electronic control that enables you to continuously adjust the capacity of the pump. Very easy to reduce your flow in the pond in winter, for example.

Red Label pumps are extremely energy efficient and even rank as the most efficient in their price range. The pump is easy to adjust thanks to the included accessories. ACP pumps have a high flow, are safe, very easy to use and have a long service life.

The pump is supplied as a complete kit with an electronic controller and couplings that simplify the connection of the pump.



ACP POND PUMP W1060045



6500	
Capacity	6.500 l/h
Power	4 - 38 Watt
Pressure	3,8 mwc
Outlet	Hose tail 1"- 1 ½"- 1 ¼"

ACP POND PUMP W1060046



10000	
Capacity	10.000 l/h
Power	4 - 78 Watt
Pressure	4,5 mwc
Outlet	Hose tail 1"- 1 ½"- 1 ¼"

ACP POND PUMP W1060047



13000	
Capacity	13.000 l/h
Power	4 - 125 Watt
Pressure	5,0 mwc
Outlet	Hose tail 1"- 1 ½"- 1 ¼"

ACP POND PUMP W1060048



20000	
Capacity	20.000 l/h
Power	4 - 200 Watt
Pressure	6,0 mwc
Outlet	Hose tail 1"- 1 ½"- 1 ¼"

FEATURES:

- Energy efficient
- Environmentally friendly
- Safe operation
- Simple usage
- High flow rate
- High light output
- Long lifespan
- Includes couplings
- 2-year warranty*
- Made in the Netherlands

RVS JUVC FILTERS

The Aquaking Red Label JUVC ensures crystal clear water and contributes to the health of your pond fish. The built-in T5 UVC lamp delivers UV-C short wave radiation with a peak wavelength of 253.7 nm. This high radiation dose kills fungi, bacteria and germs without the use of harmful chemicals.

The polished stainless steel interior of the housing ensures that virtually no contaminant adheres to the inside and ensures 35% more light output thanks to extra reflection. Floating algae are destroyed by UV-C radiation, resulting in crystal clear pond water. Chlorine and other chemicals are reduced by up to 80%.

The extra-large housing with straight coupling at the bottom ensures a greater flow and less pressure loss. The couplings used ensure very easy installation and 360° installation possibilities.

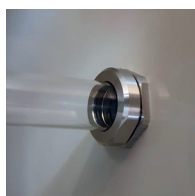


BUILT-IN UVC UNIT

Instead of including a UVC filter in your pipework, it is possible to build a UVC in your filter. We recommend the Red Label UVC 40 Watt INOX module for this. Due to the high level of quality and short installation time, this UVC filter can be used on almost any filter. This unit is equipped with a 40-Watt HO lamp that is more than sufficient for most ponds due to the high yield.

If you have a larger pond, you can opt for an 80 Watt version. Due to the length of an 80 Watt lamp, it cannot be placed in every filter system. The choice for 2 units of 40 Watt is a sensible one. In addition, with two smaller units you have backup in case of malfunctions and you can switch off a unit in periods when 1 lamp is sufficient.

* Excluded from warranty are the lamp and quartz glass.



UVC

F1050011



RVS JUVC 40

Measurements L x W	907 x 105 mm
Maximum flow	20.000 liter
Maximum pond content	35.000 liter
UVC	40 Watt
Burning hours	8.000
Maximale pressure	2 bar
Inlet/Outlet	2" 63 mm

UVC

F1050012



RVS JUVC 80

Measurements L x W	907 x 105 mm
Maximum flow	20.000 liter
Maximum pond content	70.000 liter
UVC	80 Watt
Burning hours	8.000
Maximale pressure	2 bar
Inlet/Outlet	2" 63 mm

UVC

F1050056
F1050057



BUILT-IN UVC 40/80 HIGH-OUTPUT

F1050056	40 Watt H-O
F1050057	80 Watt H-O
Length 40 /80	480/660 mm
Built-in length 40 / 80	430/610 mm
Installation opening	50 mm
Burning hours	12.000

UVC

F1050063
F1050064



BUILT-IN UVC 40/80 INOX

F1050063	40 Watt INOX
F1050064	80 Watt INOX
Length 40 /80	480/660 mm
Built-in length 40 / 80	430/610 mm
Installation opening	33 mm
Burning hours	12.000

UVC

F1030000



AQUAKING INDUSTRIAL GERMINATOR

F1030017	AM 90 Watt
F1030018	AM 110 Watt
F1030019	SS 44 Watt
F1030020	SS 2x 44 Watt
F1030021	SS 63 Watt

FEATURES:

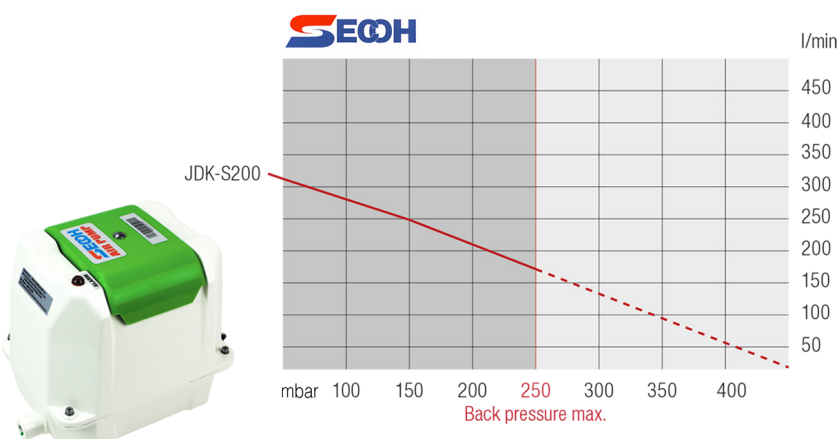
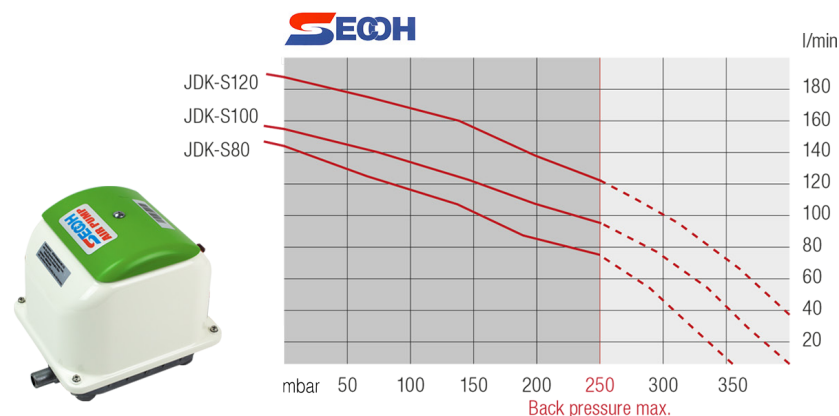
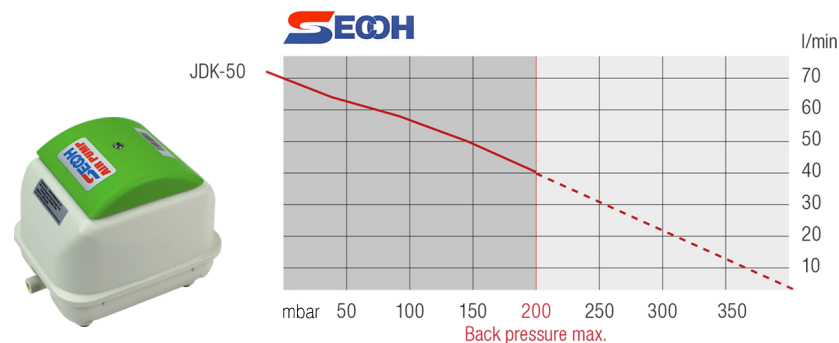
- Energy efficient
- Environmentally friendly
- Safe operation
- Simple usage
- Efficient technology
- Low noise level
- Low vibration
- High output
- Long lifespan
- Includes couplings
- 2-year warranty

AIR PUMPS

An air pump must deliver sufficient capacity at great counter pressure (depth). This is important to ensure optimal functioning of your pond system. The capacity of an air pump must be tailored according to your specific situation.

Due to the combination of very good properties and performance, we recommend the use of Secoh air pumps. Secoh is a Japanese manufacturer that supplies a wide range of extremely high quality air pumps. Secoh air pumps have a very silent and low-vibration operation. Motor and pump parts are combined in one construction. The compact, lightweight housing and simple mechanism guarantee a long operating period.

The principle of electromagnetic oscillation, which has practically no friction on the mechanism, minimises energy consumption and offers a high degree of efficiency. The oil-free operation guarantees a dry and uninterrupted air flow. Specially shaped pump chambers and integrated outlet provide an air flow that is practically pulsation free.



AIR PUMP

B2010009



JDK-50

Measurements	221 x 177 x 200 mm
Capacity	50 l/m at 150 mbar
Outlet	19 mm
Power	42 Watt
Weight	4,5 kg

AIR PUMP

B2010010



JDK-S80

Measurements	214 x 185 x 211 mm
Capacity	85 l/m at 200 mbar
Outlet	19 mm
Power	50 Watt
Weight	6,5 kg

AIR PUMP

B2010011



JDK-S100

Measurements	214 x 185 x 211 mm
Capacity	108 l/m at 200 mbar
Outlet	19 mm
Power	75 Watt
Weight	6,5 kg

AIR PUMP

B2010012



JDK-S120

Measurements	214 x 185 x 211 mm
Capacity	138 l/m at 200 mbar
Outlet	19 mm
Power	95 Watt
Weight	6,5 kg

AIR PUMP

B2010013



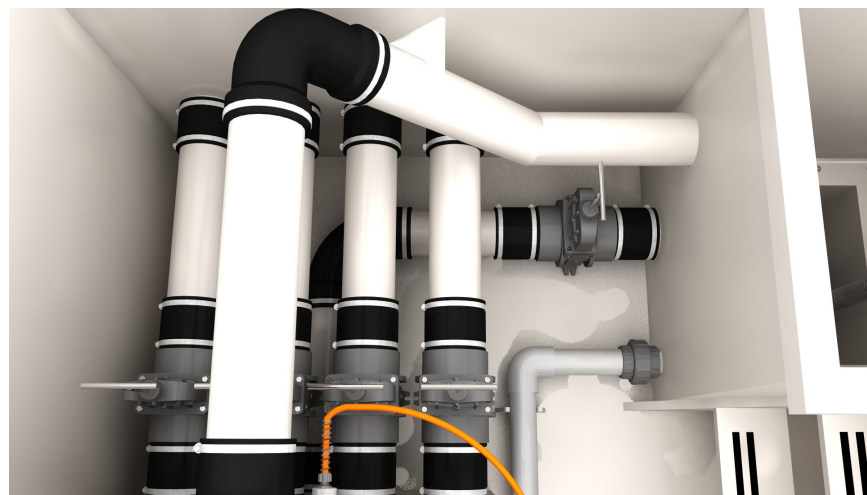
JDK-S200

Measurements	240 x 180 x 230,5 mm
Capacity	215 l/m at 200 mbar
Outlet	26 mm
Power	120 Watt
Weight	10 kg

RUBBER COUPLINGS

Preferably use flexible rubber couplings when connecting the pipework. These can absorb small differences in size and dampen vibrations. Flexible rubber couplings have numerous advantages in use when connecting PVC pipes to one another, but in particular also with materials that cannot be glued or are poorly glued, such as stainless steel, PP, PE, concrete and polyester.

Because the couplings are very flexible, they are also suitable for use when pipes do not coordinate 100% with each other. Even in case of changes to systems, test or temporary set-ups, the flexible couplings can be disassembled/assembled very quickly, without the labour-intensive and unhealthy process of gluing of joints. With the help of flexible couplings, pipes can also be connected at temperatures below freezing when joining is not possible. In case of burst pipes (e.g. due to frost) it is often also possible to quickly make an (emergency) repair with the help of flexible couplings. In addition to the simple installation of pipes, an additional advantage is that the flexibility of the rubber dampens vibrations (from pumps, for example). As a result, they also contribute significantly to the prevention of breakage due to excess force in PVC pipes.



PIPECONX
UNIVERSAL PIPE CONNECTORS

PIPECONX



KNEE

H1050005	50 mm
H1050006	63 mm
H1050007	90 mm
H1050008	110 mm

PIPECONX



T-JOINT

H1050015	50 mm
H1050016	63 mm
H1050017	90 mm
H1050018	110 mm

PIPECONX



SOCK

H1050009	50 mm
H1050010	63 mm
H1050011	90 mm
H1050012	110 mm
H1050013	125 mm
H1050014	160 mm

PIPECONX



REDUCER

H1050019	50 x 63 mm
H1050020	63 x 90 mm
H1050021	63x 110 mm
H1050022	110 x 125 mm
H1050023	110 x 160 mm

PIPECONX



END CAP

H1050001	50 mm
H1050002	63 mm
H1050003	90 mm
H1050004	110 mm

MATERIALS & PARTS

We strive to deliver products with a long lifespan and support this by providing appropriate guarantees and customer service. If a part of your installation needs to be replaced, you can order most parts from us. If a part is not included on the following pages, you can inquire about availability by sending an email to info@aquaking.nl.

DRUM FILTER



CONTROL BOX PRO

O1140004	Control box PRO
O1140014	Pressure sensor
O1140006	Pressure sensor cable

DRUM FILTER



CONTROL BOX BASIC LUXE

O1140016	Control box LUXE
----------	------------------

DRUM FILTER



CONTROL BOX BASIC

O1140001	Control box BASIC
O1210015	Float complete

DRUM FILTER



SPRAY BAR NOZZLE

F2100005	Nozzle complete
O1170001	Seal per 10
O1170002	Holder, clamp, bracket
O1170003	RVS bout per 10
O1170004	Nozzle cap green
O1170005	Nozzle cap red
O1170006	Jet sprayer per 10

DRUM FILTER



DRIVE MOTOR

O1080002	PRO filter
O1080008	BASIC filter

DRUM FILTER



FLUSH PUMP PRO

O1020001	PRO stainless 5 bar
O1020002	PRO stainless 7 bar

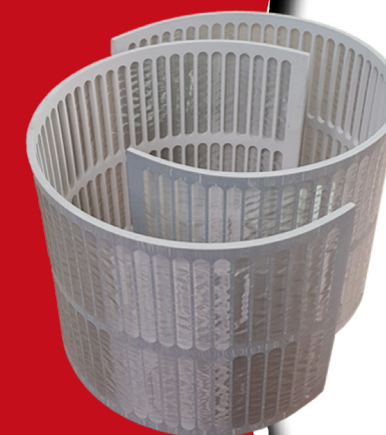
DRUM FILTER



FLUSH PUMP BASIC

W1020006	BASIC Q800103 3 bar
----------	---------------------

DRUMFILTER



STAINLESS STEEL SCREEN PANELS

690044	ED20		75 m
O1100002	Round	100 x 40 cm	75 m
O1100003	Round	120 x 40 cm	75 m
O1100004	Round	75 x 40 cm	75 m
O1100006	PRO	95 x 40 cm	120 m
O1100007	HAPPY, BASIC 2, ED20	114 x 40 cm	80 m
O1100008	PRO round	75 x 40 cm	120 m
O1210012	Profile Stainless 316 panel mounting		
O1210016	HAPPY, BASIC 2, ED20	114 x 40 cm	120 m
O1210024	BASIC 30/35, ED20	75 x 40 cm	120 m

MAINTENANCE



LUBRICATION

F2100004	40 ml
Info	Wet and dry applicable

PVC



SLIDE VALVE VDL

H1130070	VDL 63 mm
H1130071	VDL 110 mm

PVC



BALL VALVE INDUSTRIAL

H1130014	25 mm
H1130015	32 mm
H1130016	40 mm
H1130018	50 mm
H1130019	63 mm
H1130020	75 mm
H1130021	110 mm

ACCESSORIES



SUBMERSIBLE PUMP

W1020007	Q50011 internal float 10.000 l/h 8,5 mwc 500 Watt
----------	---

ACCESSORIES



SUBMERSIBLE PUMP

W1020011	Q1000V2 internal float 20.000 l/h 9 mwc 1000 Watt
----------	---

AERATION



AIR HOSE

S2010001	7-10 mm
S2010003	9-12 mm
S2010005	10-14 mm
S2010007	12-16 mm
S2010009	14-18 mm
S2010011	19-23 mm

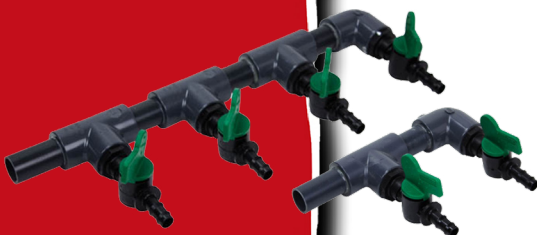
AERATION



AIR TUBES

B2020001	30 x 130 mm
B2020002	40 x 210 mm
B2020003	50 x 150 mm
B2020004	50 x 300 mm

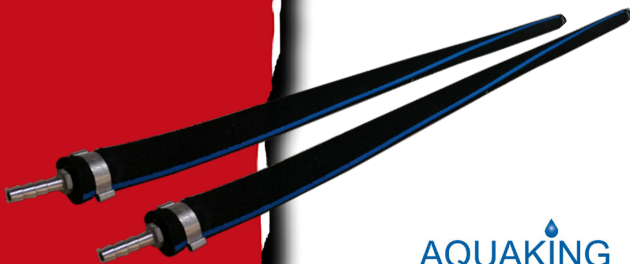
AERATION



AIR DISTRIBUTOR

B2030001	1 connection	9 mm
B2030002	2 connections	9 mm
B2030003	3 connections	9 mm
B2030004	4 connections	9 mm
B2030005	5 connections	9 mm
B2030006	6 connections	9 mm

AERATION



AIR CURTAIN

W2040001	Air curtain complete 20/28 mm length 1 meter connection 9 mm
W2040002	Air curtain complete 20/28 mm length 2 meter connection 9 mm

FILTER MEDIA



SANSAI CRISTAL BIO TRICKLE

810206	Box 96 liter
--------	--------------

Very large biological surface.
The filter medium with the lightest weight!

AQUAKING

AQUAKING

AQUAKING

AQUAKING

AQUAKING

sansai

FILTER MEDIA



HEL-X BIO CARRIER 955 M²/M³

B1020004 Bag 100 liter

Unparalleled bonding surface.

Light weight design for optimal buoyancy.

Very large protected surface for biofilm.

FILTER MEDIA



RED-X FILTER MAT 625 M²/M³

810195 50 x 50 x 5 cm

810190 100 x 100 x 5 cm

810185 200 x 100 x 5 cm

MODEL
2022



2022: Renewed fiber with improved adhesion.

FILTER MEDIA



SANSAI FILTER BRUSHES

810140 100 x 250 mm

810150 100 x 400 mm

810170 150 x 400 mm

810175 150 x 500 mm

810180 150 x 600 mm



UVC



AQUAKING INDUSTRIAL GERMINATOR

F1030001	Ballast	SS 44 Watt
F1030002	Ballast	SS 63 Watt [80 Watt]
F1030003	Ballast	AM 90/105/110 [120 Watt]
F1030004	Replacement lamp T-5	SS 44 Watt
F1030005	Replacement lamp T-5	SS 63 Watt
F1030006	Replacement lamp T-5	AM 41 Watt
F1030007	Replacement lamp T-5	AM 90 Watt
F1030008	Replacement lamp T-5	Amalgam 105 Watt
F1030009	Quartz glass	SS 44 Watt
F1030010	Quartz glass	SS 63 Watt
F1030011	Quartz glass	AM 41 - 90 - 110 Watt
F1030012	Sealing ring	
F1030013	Flange and seal	
F1030014	Wall bracket	
F1030015	Ballast	SS 2x 44 Watt
F1030016	Cable	orange 3 meter



UVC



RVS JUVV

F1050021	Ballast RVS JUVV 40 Watt
F1050022	Ballast RVS JUVV 80 Watt
F1050051	Replacement lamp RVS JUVV 40 Watt
F1050052	Replacement lamp RVS JUVV 80 Watt
F1050026	Quartz glass RVS JUVV 40 & 80 Watt

UVC



BUILT-IN UNIT AMALGAM (OLD MODEL)

F1050023	Ballast Built-in unit 40 Watt
F1050024	Ballast Built-in unit 80 Watt
F1050053	Replacement lamp Built-in unit 40 Watt
F1050054	Replacement lamp Built-in unit 80 Watt
F1050027	Quartz glass 40 Watt amalgam / H-O
F1050028	Quartz glass 80 Watt amalgam / H-O
F1050062	Sealing cap Built-in unit 40/80 Watt

UVC



BUILT-IN UNIT HIGH-OUTPUT

F1050058	Ballast Built-in unit 40 Watt
F1050059	Ballast Built-in unit 80 Watt
F1050060	Replacement lamp 40 Watt H-O
F1050061	Replacement lamp 80 Watt H-O
F1050027	Quartz glass 40 Watt amalgam / H-O
F1050028	Quartz glass 80 Watt amalgam / H-O
F1050062	Sealing cap Built-in unit 40/80 Watt

BUILT-IN UNIT INOX

F1050067	Ballast Built-in unit 40 Watt INOX
F1050068	Ballast Built-in unit 80 Watt INOX
F1050060	Replacement lamp 40 Watt INOX
F1050061	Replacement lamp 80 Watt INOX
F1050065	Quartz glass Built-in unit 40 Watt
F1050066	Quartz glass Built-in unit 80 Watt
O1030112	Mainstay Built-in unit 80 Watt

NEW
2022

ACCESSORIES



ACP POND PUMP

W1050002	Basket 13000 - 20000
W1050003	Basket 6500 - 10000
W1050016	Hose tail 2" 13000 - 20000
W1050015	Hose tail 1 1/2" 6500 - 10000

ACCESSORIES



ANP POND PUMP

W1050001	3-part coupling 2" 63 mm
W1050004	Bottom plate 13000 - 20000
W1050005	Bottom plate 6500 - 13000
W1050014	Hose tail 2" 13000 - 20000
W1050013	Hose tail 1 1/2" 6500 - 10000
W1050017	Dirt basket 2" 13000 - 20000
W1050018	Dirt basket 1 1/2" 6500 - 10000

ACCESSORIES



ANP & ACP POND PUMP

W1050002	Control box 13000 - 20000
W1050003	Control box 6500 - 10000

ACCESSORIES



ANP & ACP POND PUMP

W1050034	Rotor 13000 - 20000
W1050035	Rotor 6500 - 10000

ACCESSORIES



ANP & ACP POND PUMP

W1050008	Pump housing 13000 - 20000
W1050009	Pump housing 6500 - 10000

ACCESSOIRES

AUTOMATIC REFILL SYSTEM

V1030035	Complete set
O1330001	Water switch including sensor
O1033111	Switch holder
I1040038	Valve 1" 10 bar
I1040039	Transformer 230 V
H1070226	PVC transit 20 x 1"

MODEL
2022



O1330001



O1033111



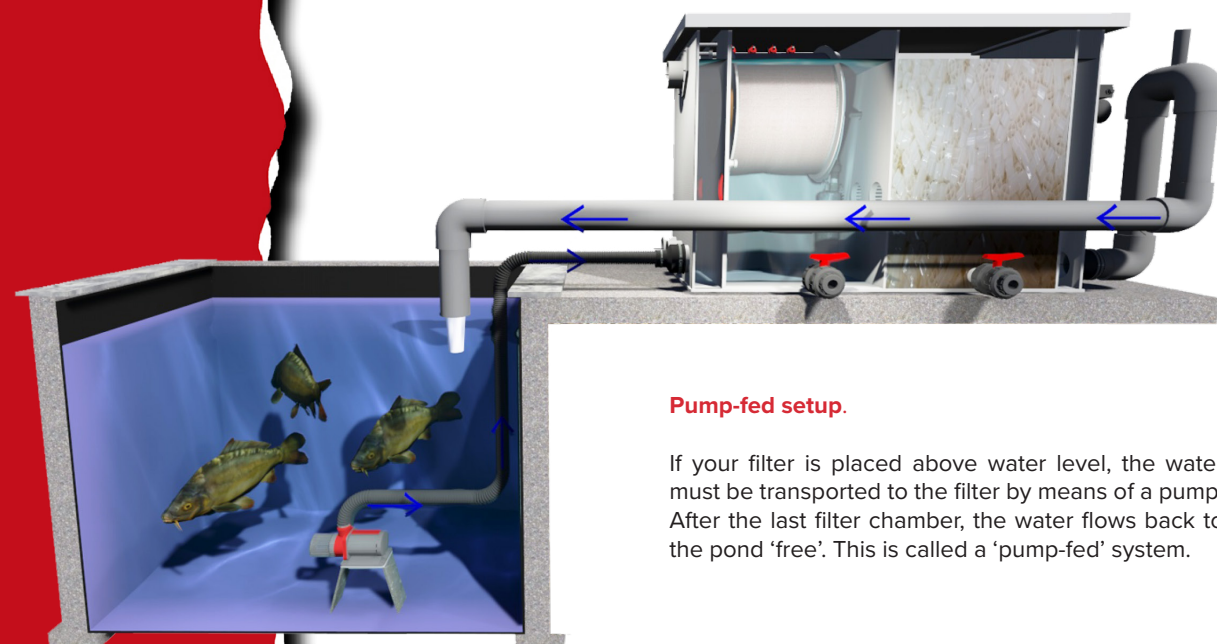
I1040038



I1040039

H1070226

FILTER SETUP

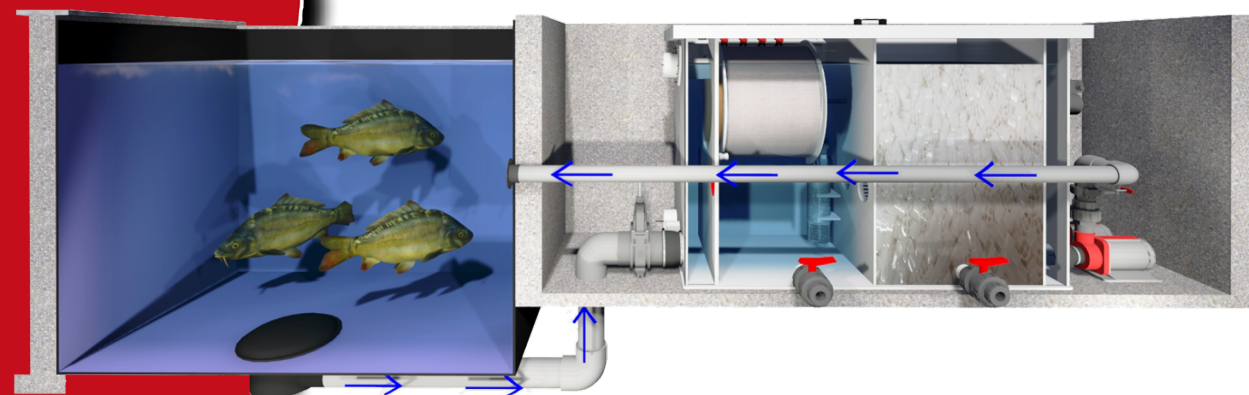


Pump-fed setup.

If your filter is placed above water level, the water must be transported to the filter by means of a pump. After the last filter chamber, the water flows back to the pond 'free'. This is called a 'pump-fed' system.

Gravity filter setup.

The preference is for the filter to be placed below the water level of the pond. Due to the force of gravity, your filter fills up with water. A pump moves the water from your filter back to the pond. This setup is known as a 'gravity' system. The latter is preferred because a pump has to work less hard and therefore delivers better results and works more efficiently.



If your pump fails, water will still remain in the filter system, which benefits your filter material. In case of faults in the pond system, there is no risk that the pump will empty the pond, the pond cannot drain beyond the depth of the filter. There's no pump or pond hose in the pond, so it looks nicer. In addition, fish cannot harm themselves. You can easily reach the pump for any required maintenance.

COLOPHON

Head office:

Aquaking Red Label
Huisbergenweg 3
5249 JR Rosmalen
The Netherlands
T: +31(0)73 521 27 30

Production & storage:

Aquaking Red Label
Bart van Slobbestraat 16C
6471 WV Eygelshoven
The Netherlands
T: +31(0)45 53 55 220

Bank: ABN AMRO
IBAN: NL07ABNA0535481756
BIC/SWIFT: ABNANL2A
BTW: NL805933840B01

Copyright © 2022 AquaKing BV
v1.622

AquaKing BV reserves the right to interim price changes, changes in depicted products, changes in specifications, typing errors and / or other unforeseen changes.

